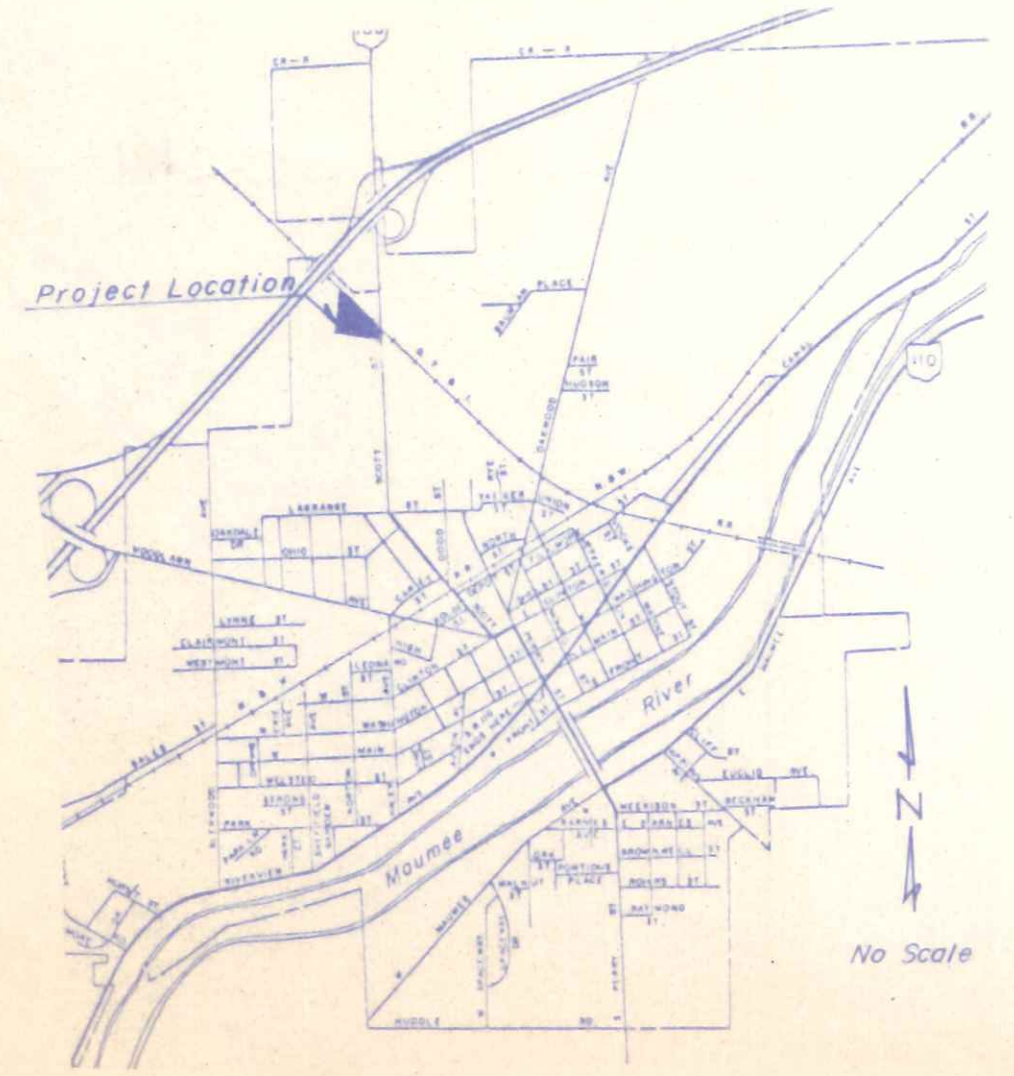


N

Scale: 1" = 40'

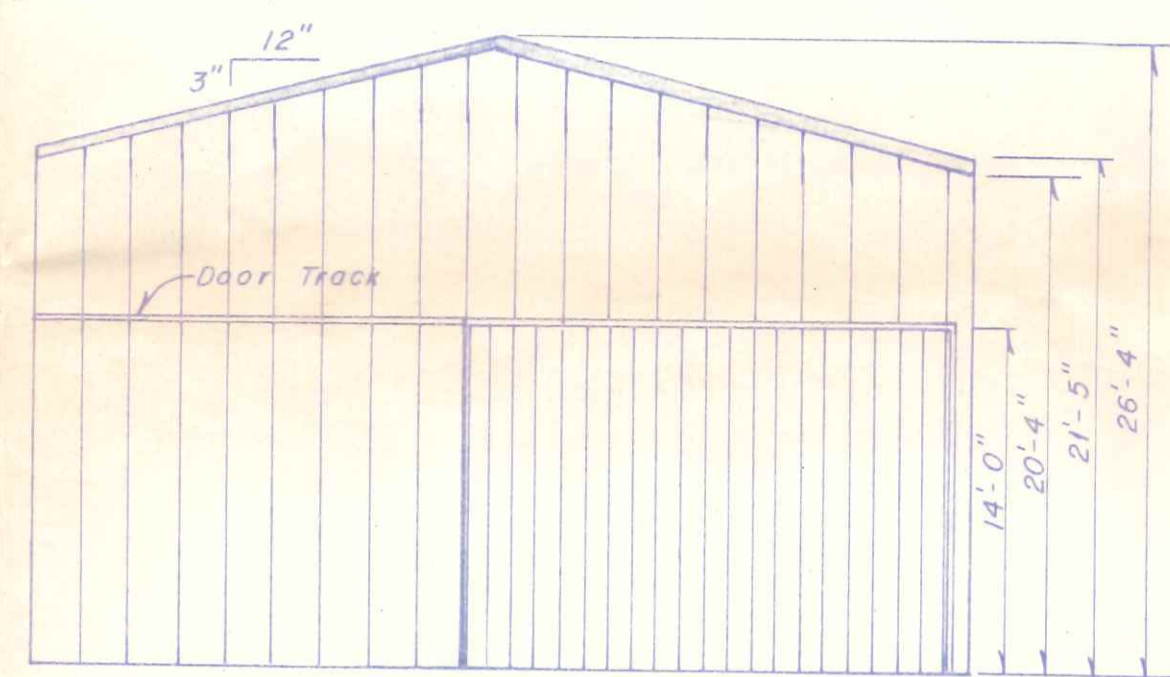
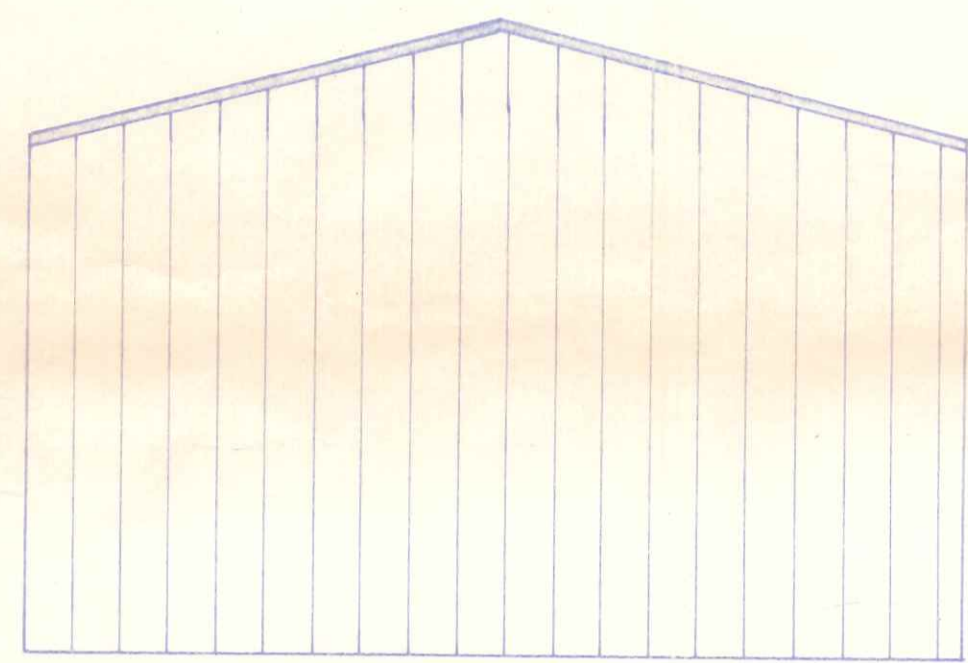
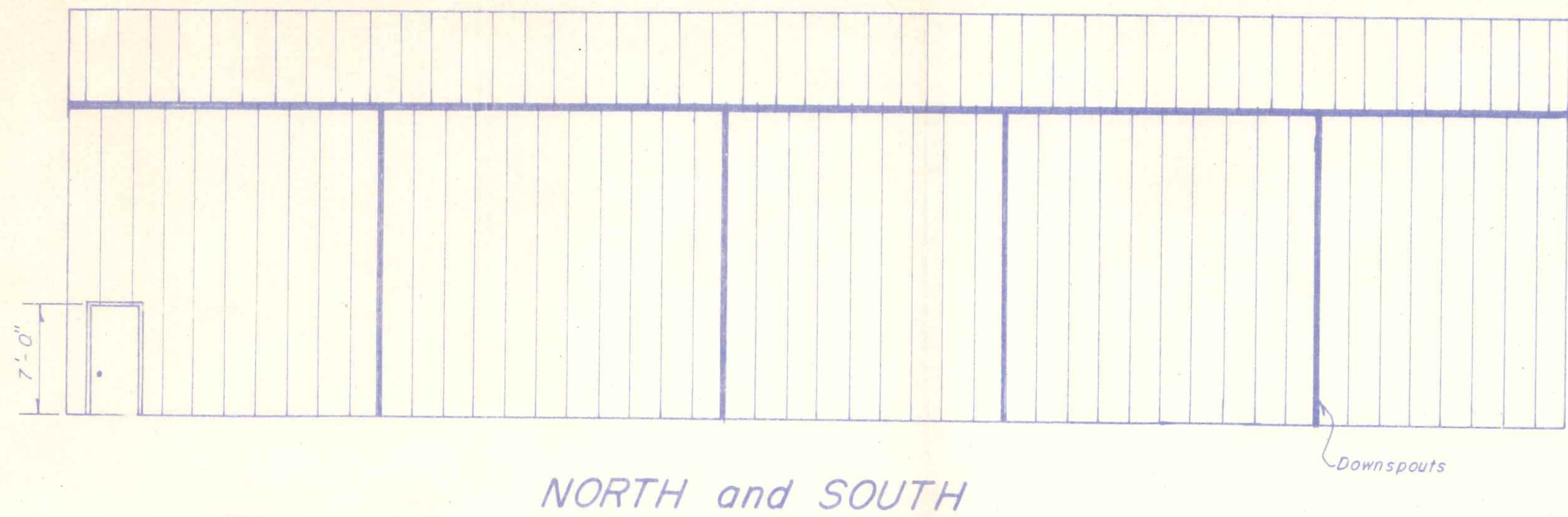
PROVIDE FOLLOWING -  
 A-B AND HARDWARE ON EXIT DOORS  
 EXIT SIGNS OR OBVIOUS MEANS OF EXIT



STATE OF OHIO  
 RANDOLF L. GERHARDT  
 33142  
 REGISTERED PROFESSIONAL ENGINEER  
*Randolph L. Gerhardt*  
 4-10-79

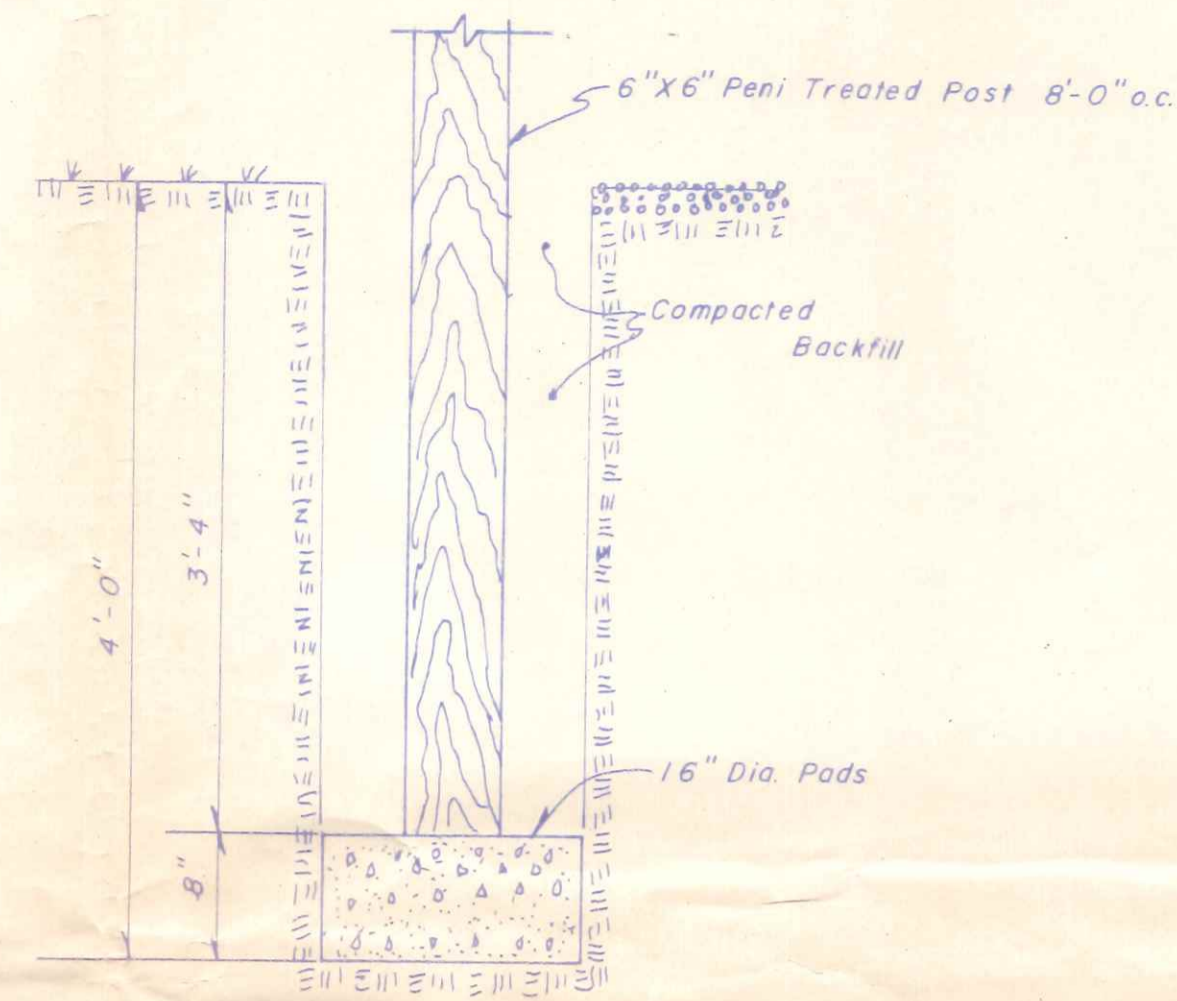
**PLOT PLAN**  
 For The: FOSTER CANNING Co.  
 Plans By: The Napoleon Lumber Co.  
 1513  
 North Scott Street Napoleon, Ohio

SHEET  
 OF



30psf Live Load  
5psf Dead Load  
15psf Wind Load

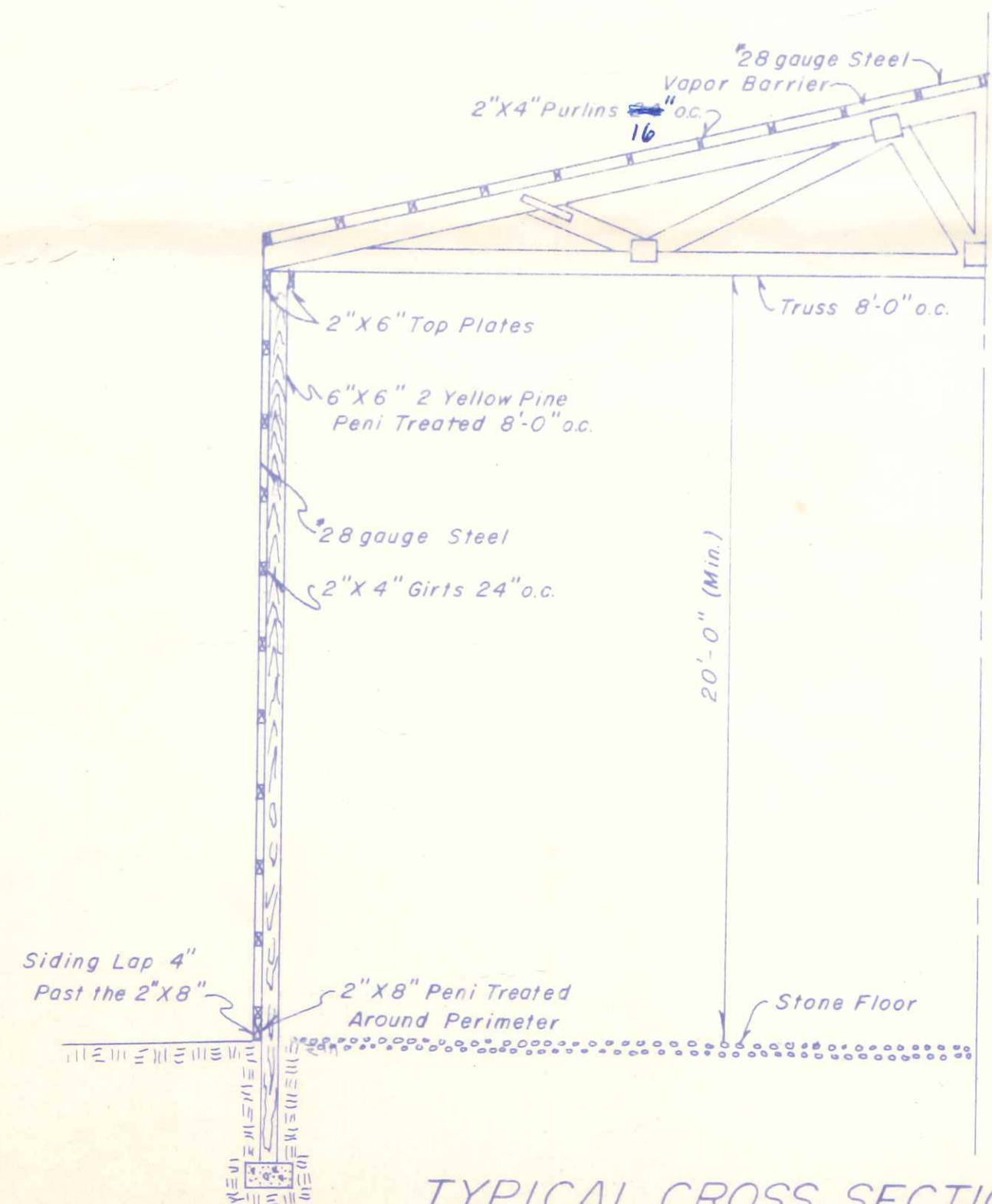
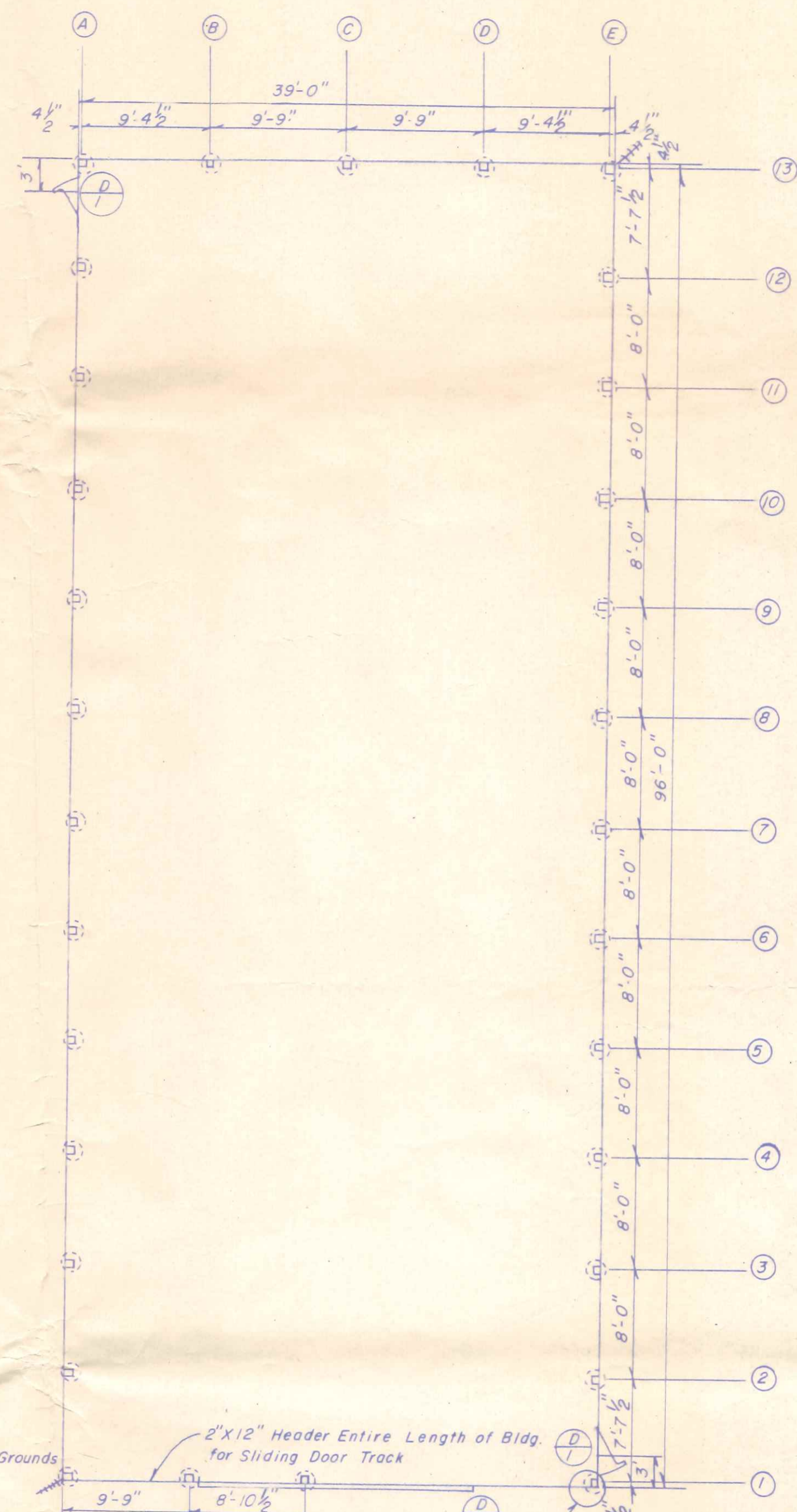
ELEVATIONS



TYPICAL FOOTING DETAIL

For @ @ @ @ @ ① thru ③

Scale: 1" = 1'-0"



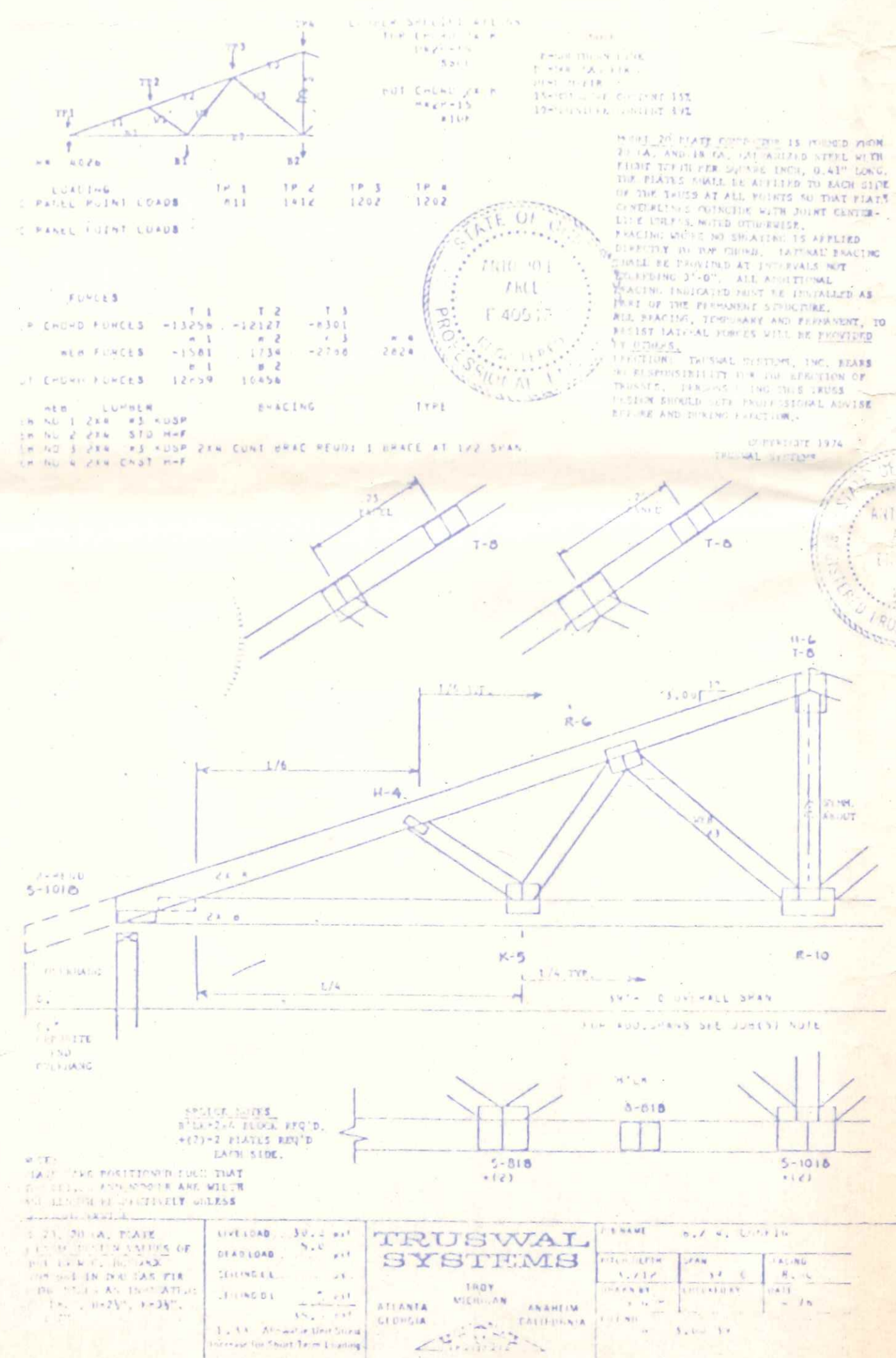
TYPICAL CROSS SECTION

Scale: 1/4" = 1'-0"

See Truss Data Sheets for More Data

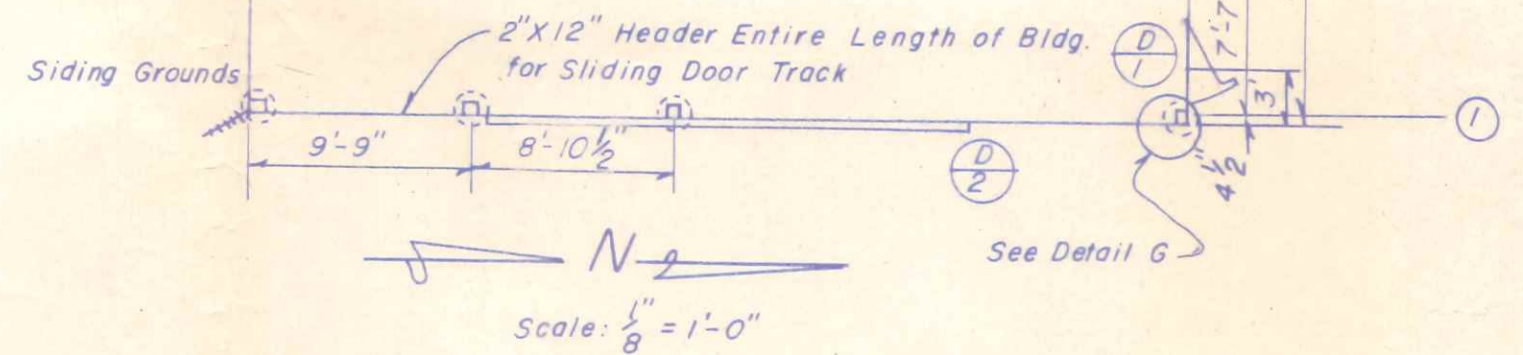
1200 psi wood stress

E of Building



DETAIL G

NOTE:  
This Building is for Storage  
There is no Conc. Floor, Heating,  
Electrical or Plumbing in this Building



Door Schedule	
①	Pass Door 3'X6'-8"
②	Sliding Door 20'X14'

WAREHOUSE  
For The: FOSTER CANNING Co.  
Plans By: The Napoleon Lumber Co.  
North Scott Street Napoleon, Ohio